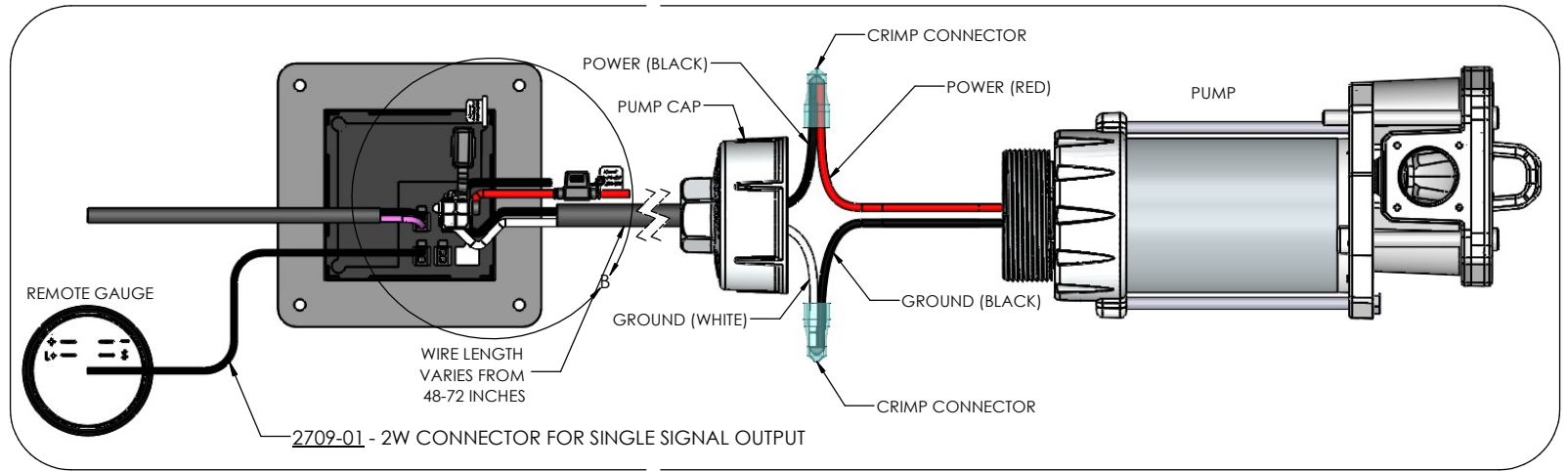


2684-02

- ONE (1) FUEL TANK
- FUEL LEVEL READING ON ECI PANEL (PUMP)
- FUEL LEVEL READING ON REMOTE GAUGE (PUMP)

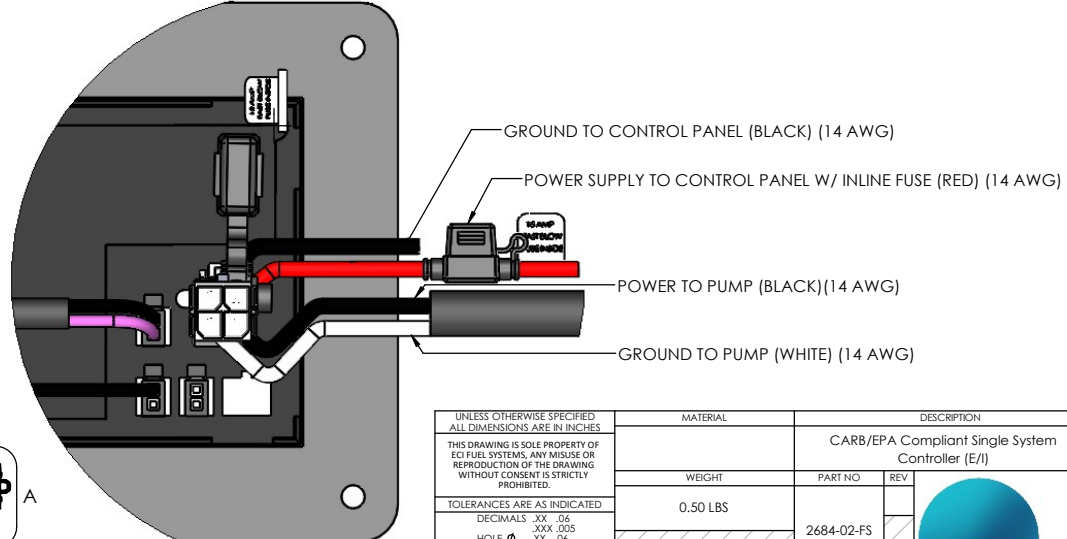
DETAIL A
SCALE 1 : 2



REQUIRED WIRING INSTALLATION:

- THE 12V DC POWER INPUT (POWER SUPPLY TO CONTROL PANEL) AND PUMP POWER CABLE OUTPUT (CONTROL PANEL TO PUMP) UTILIZE 14AWG WIRE.
- POWER INPUT FOR FUEL PUMP AND CONTROL PANEL IS REQUIRED TO BE ON A DEDICATED CIRCUIT.
- DEDICATED CIRCUIT MUST BE PROTECTED WITH 15AMP FAST ACTING FUSE. ECI RECOMMENDS THE ATC-15 (BLUE)
- REFER TO ANSI/RVIA STANDARD FOR LOW VOLTAGE SYSTEMS USED IN CONVERSION AND RECREATION VEHICLES FOR CIRCUIT DESIGN CONSIDERATIONS AND REGULATORY STANDARDS.

DETAIL B
SCALE 1 : 1



UNLESS OTHERWISE SPECIFIED ALL DIMENSIONS ARE IN INCHES THIS DRAWING IS SOLE PROPERTY OF ECI FUEL SYSTEMS. ANY MISUSE OR REPRODUCTION OF THE DRAWING WITHOUT CONSENT IS STRICTLY PROHIBITED.	MATERIAL		DESCRIPTION	
	WEIGHT		PART NO	REV
TOLERANCES ARE AS INDICATED DECIMALS .XX .04 .XXX .005 HOLE Ø .XX .06 .XXX .005 ANGLES ±1° FRACTION ±1/16	0.50 LBS		2684-02-FS	
	NAME	INI	DATE	
DRAWN BY	AA	10/11/2023	DRAWING NO	SIZE
DRAWING APV	DH			
MFG APV				
APV				
			B	SHEET SCALE: 1:10

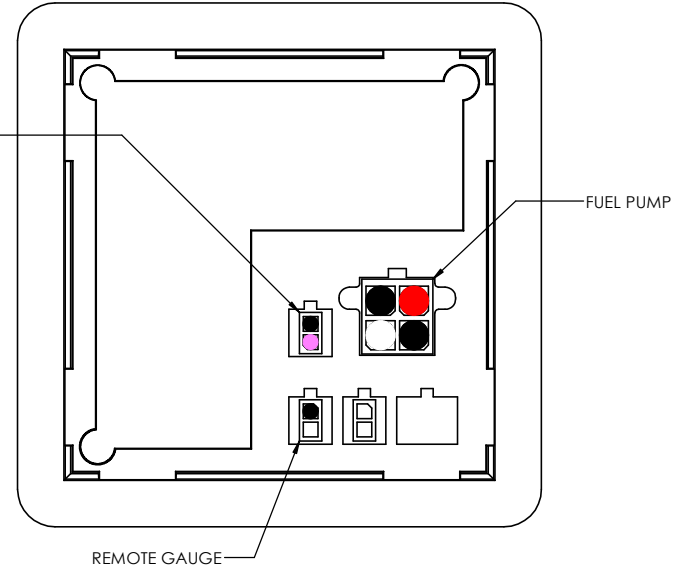
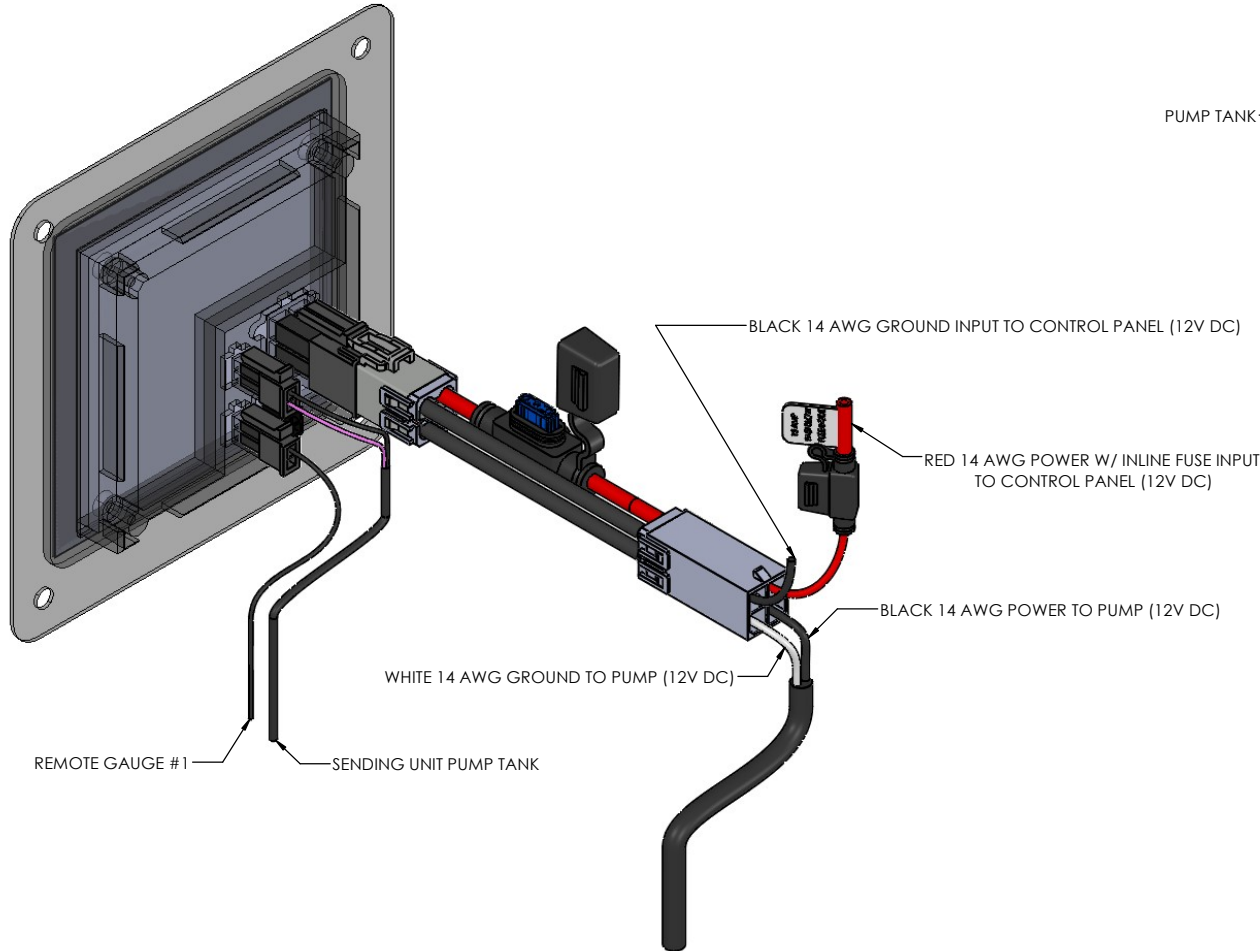


SINGLE SYSTEM W/ FLAT BRACKET WIRE SECURMENT

INSTALLATION INSTRUCTIONS:

*IF THERE IS NO FUSE HOLDER ON THE PUMP WIRE, USE THE WIRE ADAPTOR W/ FUSE HOLDER FOR THIS INSTALLATION

1. ENSURE CONNECTORS ARE PLUGGED INTO THEIR PROPER LOCATION
2. MAKE SURE THAT THERE ISN'T ANY TENSION ON THE WIRES/CONNECTORS LEADING INTO THE CONTROL PANEL.



UNLESS OTHERWISE SPECIFIED ALL DIMENSIONS ARE IN INCHES THIS DRAWING IS SOLE PROPERTY OF ECI FUEL SYSTEMS. ANY MISUSE OR REPRODUCTION OF THE DRAWING WITHOUT CONSENT IS STRICTLY PROHIBITED.	MATERIAL		DESCRIPTION	
	WEIGHT		PART NO	REV
TOLERANCES ARE AS INDICATED	0.50 LBS		2684-02-FS	
DECIMALS .XX .04 .XXX .005 HOLE Ø .XX .06 .XXX .005 ANGLES ±1° FRACTION ±1/16	NAME	INI	DATE	
	DRAWN BY	AA	10/11/2023	
	DRAWING APV	DH		DRAWING NO
	MFG APV			SIZE
	APV			B
				SHEET SCALE: 1.25:1
				SHEET:

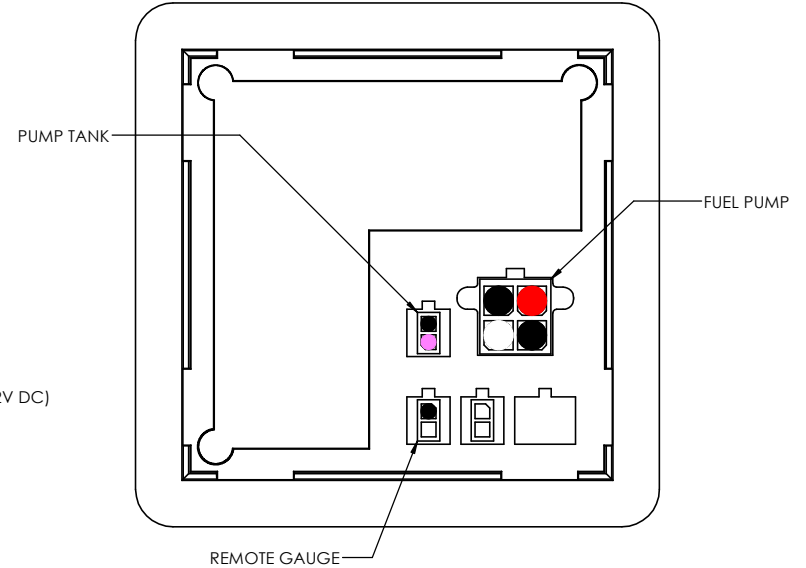
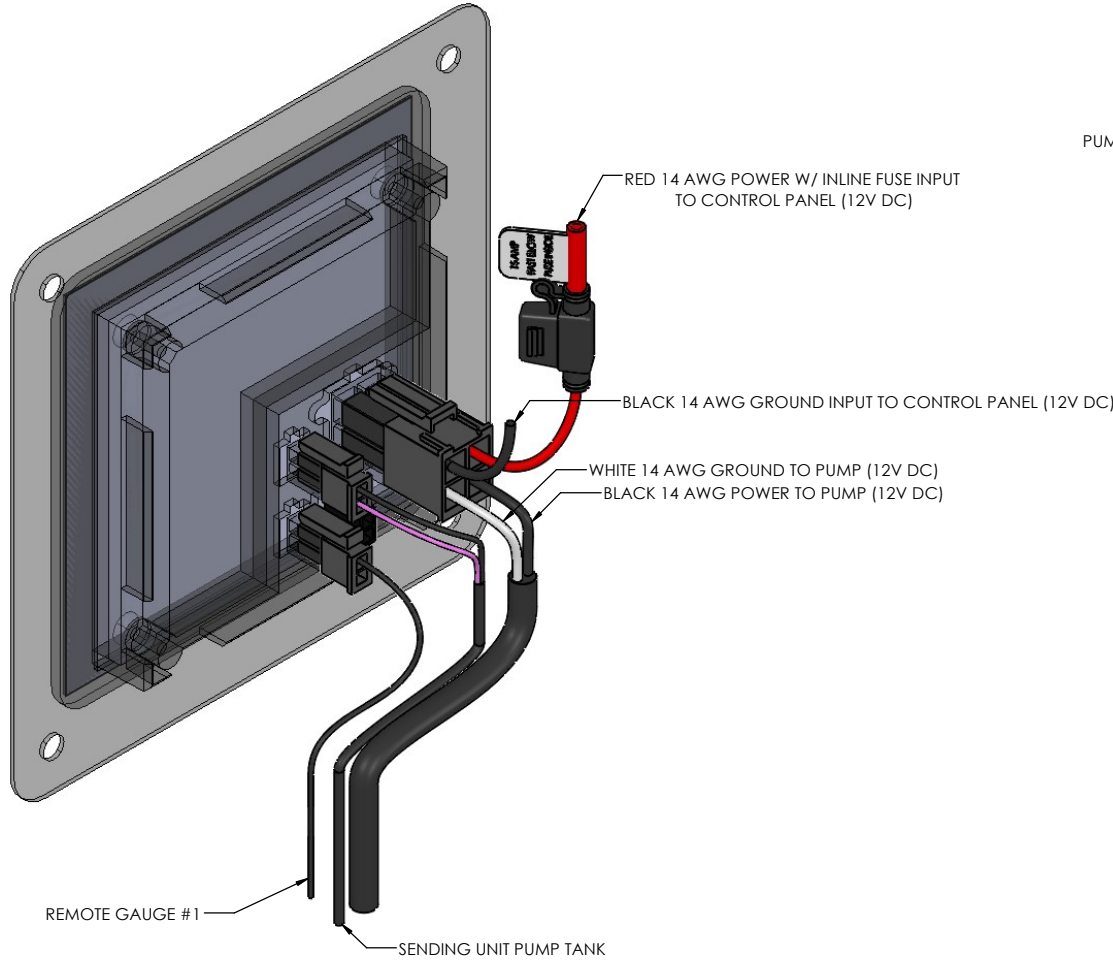


SINGLE SYSTEM W/ FLAT BRACKET WIRE SECUREMENT

INSTALLATION INSTRUCTIONS:

*IF THERE IS A FUSE HOLDER ON THE PUMP WIRE, USE THIS INSTALLATION. WIRE ADAPTOR NOT NEEDED

1. ENSURE CONNECTORS ARE PLUGGED INTO THEIR PROPER LOCATION
2. MAKE SURE THAT THERE ISN'T ANY TENSION ON THE WIRES/CONNECTORS LEADING INTO THE CONTROL PANEL.



UNLESS OTHERWISE SPECIFIED ALL DIMENSIONS ARE IN INCHES THIS DRAWING IS SOLE PROPERTY OF ECI FUEL SYSTEMS. ANY MISUSE OR REPRODUCTION OF THE DRAWING WITHOUT CONSENT IS STRICTLY PROHIBITED.	MATERIAL		DESCRIPTION	
	WEIGHT		PART NO	REV
TOLERANCES ARE AS INDICATED	0.50 LBS		2684-02-FS	
DECIMALS .XX .04 .XXX .005 HOLE Ø .XX .06 .XXX .005 ANGLES ±1° FRACTION #1/16	NAME	INI	DATE	
	DRAWN BY	AA	10/11/2023	
	DRAWING APV	DH		DRAWING NO
	MFG APV			SIZE
	APV			B
			SHEET SCALE: 1.25:1	
			SHEET:	

